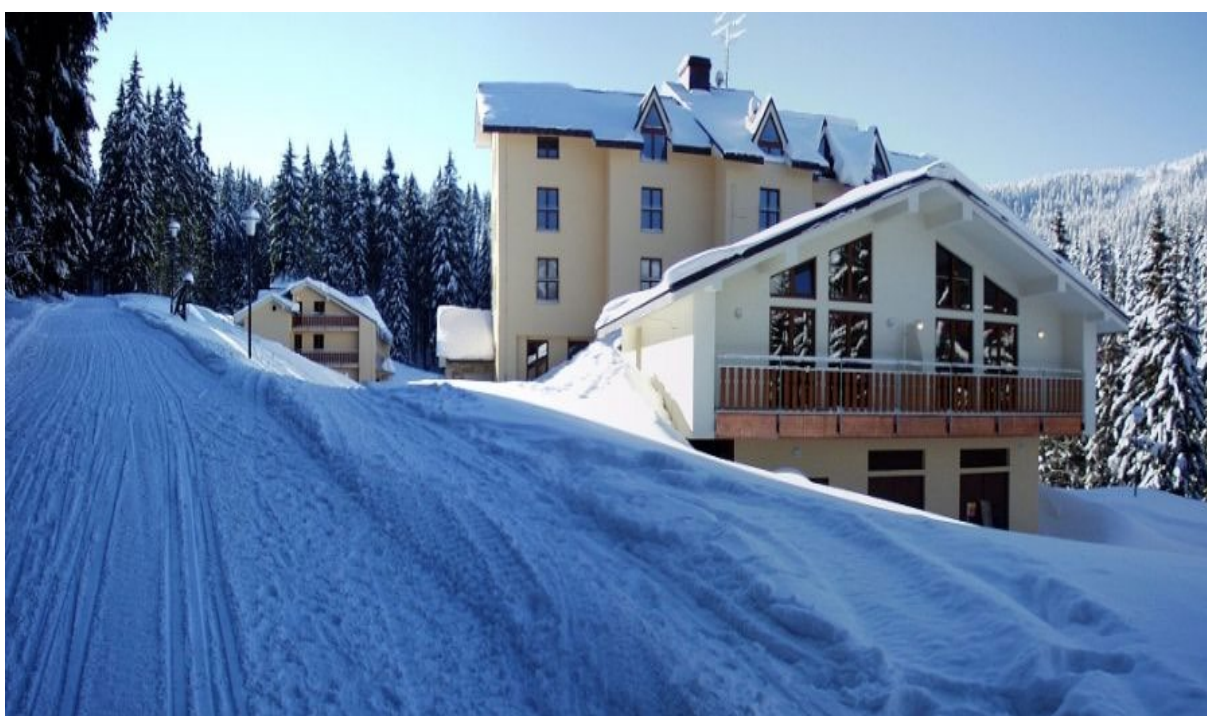


# APARTMENT COMPLEX POUSTEVNÍK

Pec pod Sněžkou 16

APARTMENT A15

Information about your vacancy



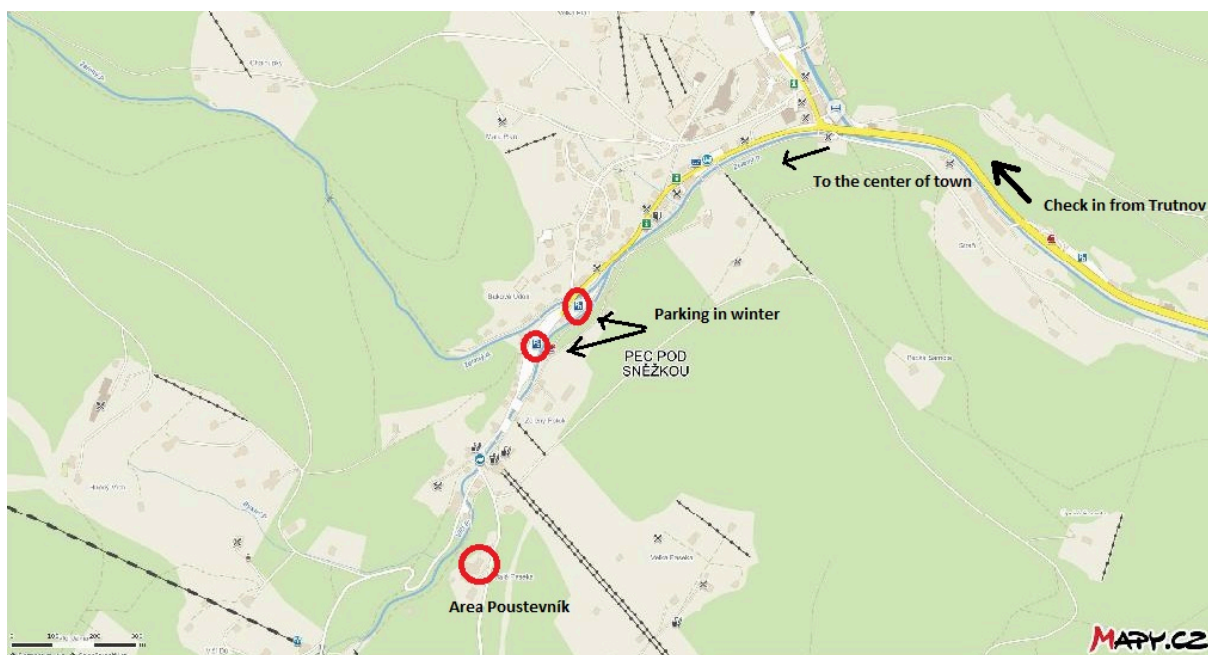
## **Apartment complex Poustevník**

This resort was build in 2004 and its near by Pec od Sněžkou (cca 700m). It is brilliant relax in the Forrest. There are slopes around building and you can start your skiing in front of entrance. You can relax with cycling or walking in spring or summer. All of the area is there for you and for your pleasant vacancy.

## **Arrival and departure**

After arriving in Pec pod Sněžkou, continue straight ahead towards the centre. You need to buy a permit at the ticket machine for the sign No entry of motor vehicles, which entitles you to enter the building area. The machine is located in front of the bridge by Jeremy's bar. Then continue left up the hill (along the Javor slope). After about 200 m you will arrive at the Poustevník area at the private parking lot. (GPS: N 50°41.12965', E 15°43.62628').

**Notice - In winter season, there could be hard to get into area with car, because there is ice and snow. (final part of way is short, but sharp). In this case, you have to park your car on public parking about 500 metres from area or in the parking house parking house next to the road in front of Pec pod Sněžkou. You could use taxi, which you can book in advance. Actual information you will receive from manager on phone number which is on the bottom of the page.**



Please, contact manager after your arrival (probably in office in main building), who will give you keys and sheeting (Saturday 15:00-20:00; other days 16:30-19:30). He will withdraw refundable bail, obligatory surcharge (750,- or 35 EUR CZK/vacancy) and vacancy tax. Please, check an apartment equipment and if you find some defect, contact manager. Poustevník is not hotel, so we can not provide you full hotel service. You have to cover your bed on your own and when you will leave, you have to pull of sheeting and take out rubbish.

**Manager: Mr. Václav Hyčá, tel. +420 724 335 431**

**Office hours:**      **Sunday – friday: 8.00 -10.00 and 16.30 – 19.30**  
                             **Saturday: All day**

Clean kitchen and takeout rubbish in check-out day. Please, keys sheeting to manager. Final cleaning will be done after your departure. **Last time of check out is 10:00.**

### **Apartment:**

Apartment is comfortable accommodation. There is bedroom with double bed, closet and chest of drawers. You can find chairs, coffee table, LED TV and dining table with chairs in living room. Near by living room is kitchenette with worktop, dishpan, cooker, dishwasher and fridge. Kitchen equipment includes plates, cutlery, glasses, kettle and coffee machine. The last room in apartment is equipped bathroom. There can be 2-4 persons in apartment. There is not allowed smoking and accommodate pets. All of equipment is there for you. You can use garden furniture in summer season, which is on terrace in front of apartment. If you do not use this furniture, please lock it. You can use books, games and maps, but please let them in apartment for other guests.

Please, do not change TV setting.

### **You can use on your holiday:**

**Indoor swimming pool** – open every day 8.00 – 21.30. Free entry. If you use swimming pool, please respect swimming pool rules. (no food and drink, take a shower before you enter into swimming pool). **Pool could be closed in off-session months - april, mai, october, november (only one part of this period), due to technical maintenance**

**Sauna** – You can order it. Manager set up it. Price is 250 CZK (10 EUR)/ per hour. Max capacity: 10 persons.

**Indoor equipment** – ski room, laundry room (payment: Eur); table football and table tennis

**Outdoor equipment** – Playground for kids, fire-circle - free

**WiFi** – free, throughout the building. After connecting to the Internet after 30 minutes with a network automatically disconnected and you must reconnect.

### **Meals:**

You can make it yourself or you can visit private restaurant in Poustevník area. Here you can buy:

**Breakfast** – buffet 125,- CZK (5,- EUR)/person/day – You have to order it at manager

**Dinner** - á la carte (menu is on board near by entrance)

**Opening hours:** please contact manager

### **Good to know:**

<b>Market</b>	Market Kubík in centre of Pec pod Sněžkou – cca 700 m
<b>Medical care</b> Practician - MUDr. Vrtala	+420 499 329 340 Mon, Wed, Thu, Fri 12.00–14.00 hod. Tue 10.00–12.00 hod
<b>Medical care</b> Surgical ambulance, winter season	+420 499 329 346 Mon, Thu 13.30–18.00 hod.

	út, st, pá. 14.00–18.00 hod. so, ne 11.00–18.00 hod.
<b>Medical care</b>  Dental surgery - MUDr. Feduňová	+420 603 413 113
<b>Mountain rescue (Pec pod Sněžkou)</b>	+420 499 896 233
<b>ATM</b>	ATM ČSOB, municipality building Pec pod Sněžkou čp. 230 ATM KB - Pec pod Sněžkou čp. 320
<b>Post</b>	Pec pod Sněžkou, č.p. 197, tel +420 499 896 283 Mon–Fri 8.00–12.00 hod., 13.00–16.00 hod. Post - Sněžka 1602 m Mon – Fri 8:00 - 16:00, <a href="mailto:info@postovnasnezka.cz">info@postovnasnezka.cz</a>
<b>Infopoint KRNAP</b>	Pec pod Sněžkou 172 Web: <a href="http://www.krnep.cz/ic-pec-pod-snezkou">www.krnep.cz/ic-pec-pod-snezkou</a> Telefon: +420 499 896 213 E-mail: <a href="mailto:icpec@krnap.cz">icpec@krnap.cz</a> hours: 8.30–12.00, 12.30–17.00 hod. (in off-season to 15:00)
<b>Infopoint Veselý výlet</b>	Pec pod Sněžkou 196 Web: <a href="http://www.veselyvylet.cz">www.veselyvylet.cz</a> Tel: +420 499 736 130, E-mail: <a href="mailto:info@veselyvylet.cz">info@veselyvylet.cz</a> Hours: 8.30–18.00 hod. (except off-season, easter holiday and from Halloween to beginning of december)
<b>Snowcat, ski-doo transport</b>	Transport Taxi Pec pod Sněžkou +420 608 103 039
<b>Taxi - SkiTaxi</b>	Transport Taxi Pec pod Sněžkou +420 608 103 039 Taxi Pec +420 608 033 242 Taxi-Transport Fiala +420 603 271 266

### **Activities:**

**Skiing** – You can use 41km slopes with 1 ski pass (resort Pec pod Sněžkou, Velká Úpa, Černá Hora and Černý důl). There is transport between resorts (ski bus). You can ski to slope Javor from Apartment Poustevník and there is possible get back to Poustevník area through slope Smrk.

**Tel.:** +420 840 888 229

**Web:** [www.skiresort.cz](http://www.skiresort.cz)

There are also tracks for cross-country skiers.





**RELAX Park** -. Rollercoaster 700m length with lift to the top. It is open in every weather(raining, snowing) and it is absolutely safely. Kids can drive with their parents.

There i also **Fly pulley** for crossover through Bukové valley and **Lemurie** – area for kids with jungle gym, slides, huge trampolines and with inflatable castle.

**Tel.:** +420 739 335 466

**E-mail:** [info@relaxpark.cz](mailto:info@relaxpark.cz)





**Monkey Park – rope park**, 22 obstacles. Don't be worry about severity, every visitor can go through rope park according to his options and there is member of rope park, who can help you alltime. Adults and kids over 140 cm tall can enter to Monkey park. There is new climbing wall.

**Tel.:** +420 777 801 050

**Web:** [www.monkeypark.cz](http://www.monkeypark.cz)

**Historical mine Kovárna** – Visit underground of the highest mountain in the Czech republic. Ticket you can buy only in Infopoint Veselý kopec in Pec pod Sněžkou. You should book it on phone 499 736 130 or through email [info@veselyvylet.cz](mailto:info@veselyvylet.cz). Mine is open in July and August.



<http://www.speleoalberice.cz/kovarnacze.htm>

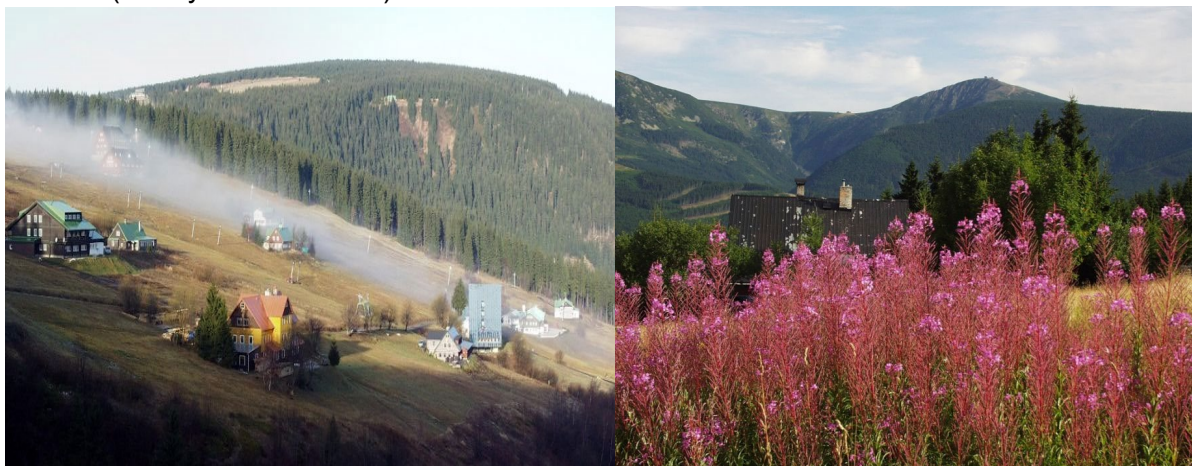
#### **Sports:**

- tenis – hotel Máma - tel.: +420 602 304 989
- bowling – pension RELAX Velká Úpa – tel.: +420 420 775 284 706
- squash, ricochet – Hotel Horizont, Pec pod Sněžkou – tel.: +420 499 861 536
- golf – Golf Club Mladé Buky – tel.: +420 604 273 293



### Hiking:

There are many options for hiking around Pec pod Sněžkou. You can use maps for planning, which is in apartment or there is website for inspiration. We recommend trip to the top of the Sněžka (here you can use lift)

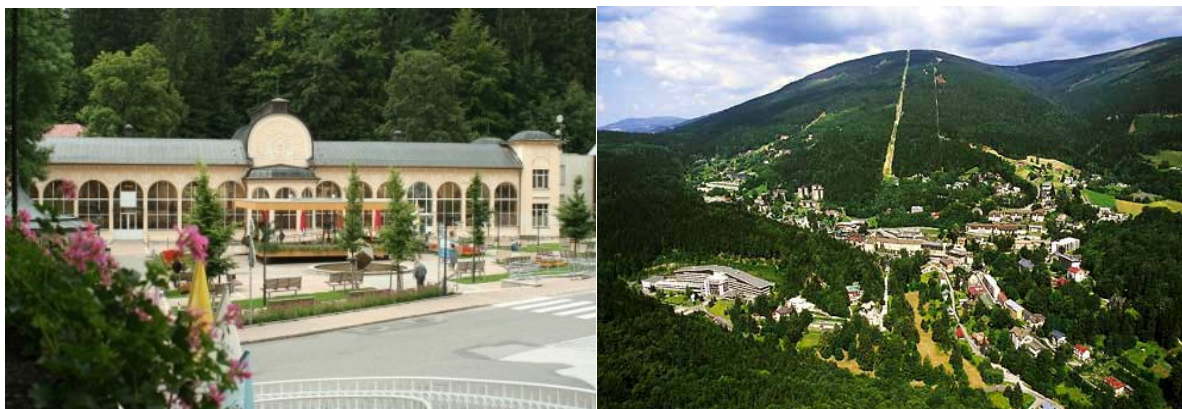


### Cycling:

Many interesting cycling tracks are in Pec pod Sněžkou and around this city. You can use lifts (Hnědý vrch, Porášky, Čená hora) with your bicycle and you can borrow bicycle from Bicycle rents. Tips for tracks: [www.pecpodsnezkou.cz/cyklotrasy/](http://www.pecpodsnezkou.cz/cyklotrasy/).

### Car trips:

**Janské Lázně – cca 15 km.** Janské Lázně is world-famous wellness city. Beautiful city, where is lift on mountain Černá hora (1299 m. n. m.). It is ideal as rudimentary point for hiking for example. You can use transport by bus from Pec pod Sněžkou to Janské lázně.



[www.janske-lazne.cz](http://www.janske-lazne.cz)

[www.janskelazne.com](http://www.janskelazne.com)

**ZOO and SAFARI Dvůr Králové – cca 42 km** - ZOO Dvůr Králové is one of the most popular ZOO in Czech republic. There is almost 2500 animals and you can find here the biggest collection of African animals in Europe.



**[www.zoodvurkralove.cz](http://www.zoodvurkralove.cz)**

**Rock city Adršpach – cca 45 km** Rock city with monumental rocks towers, two lakes, two waterfalls. You can undertake little trip on boat or you can hear resonance.



**[www.skalyadrspach.cz](http://www.skalyadrspach.cz)**

another examples:

**Špindlerův Mlýn – cca 48 km** – significant mountain resort

**Prague – cca 180 km**

**Trutnov – cca 20 km** – Summer aquapark

**Karpacz – cca 40 km** – polish wellness city

Thank you for reservation and enjoy your holiday!

**[www.pec-apartman.cz](http://www.pec-apartman.cz)**

**e mail: [info@pec-apartman.cz](mailto:info@pec-apartman.cz)**